

Λ - BLACK



The Painted Metal Atelier

A-BLACK

The application of our many years of know-how in the world of pre-painted metals allows us to best satisfy the creative needs of **architecture** and **design** projects.

A-Black is our **Premium Collection** product that gives metal a “**wrinkled**” effect.

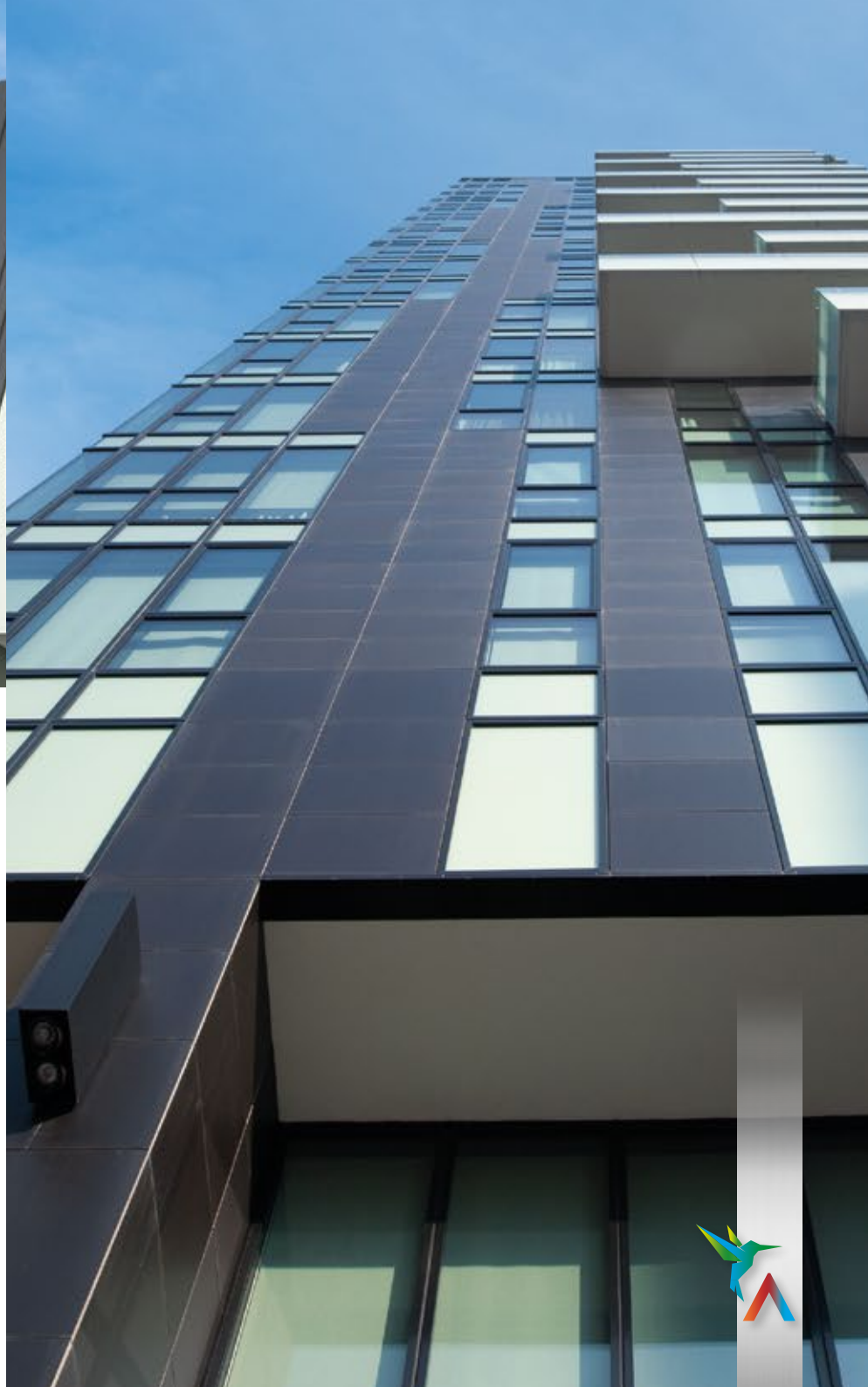
Elegant and evocative, the wrinkled effect is used in the design world to create engaging, welcoming settings, in which the material texture is often combined and enhanced with low lighting to create an emotional atmosphere.

As a result of its good mechanical properties, like **scratch resistance**, **A-Black** is also used for the production of roofing panels.

The special **A-Black** pre-painting treatment gives products a wrinkled, creased, substantial looking finish that is durable over time.



- > **Support:**
aluminium
- > **Guarantee:**
up to 10 years
- > **Applications:**
outdoor, roofing,
indoor

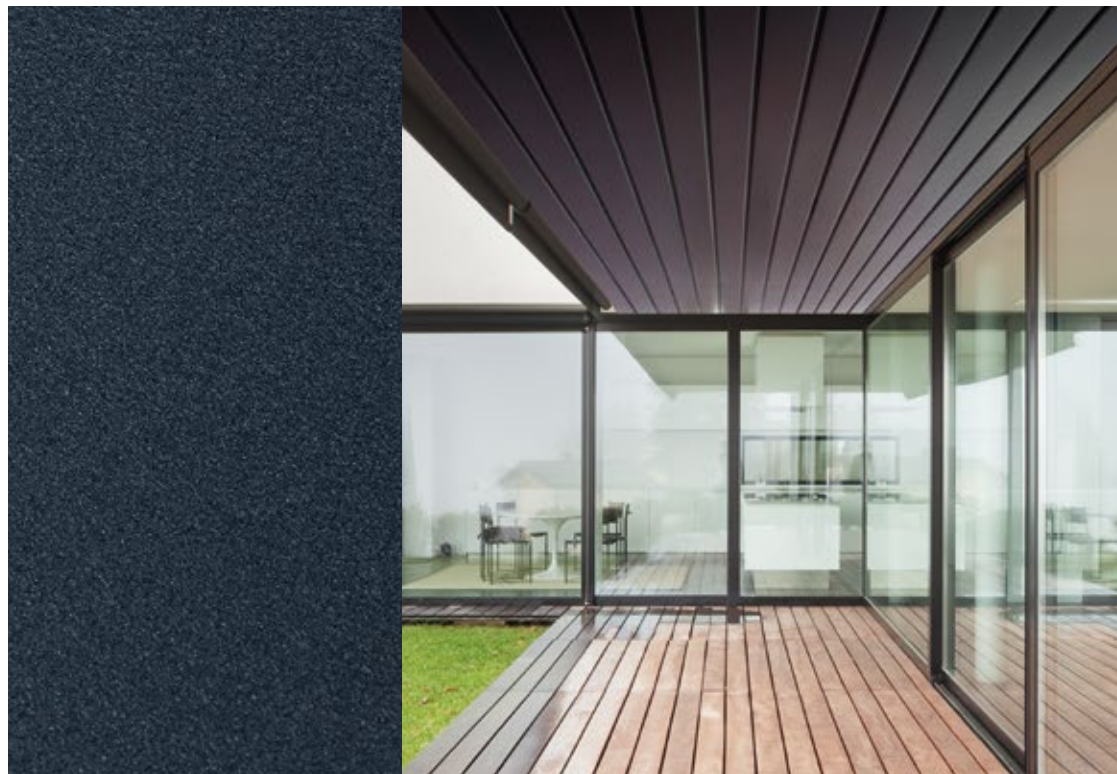


A-BLACK

A-Black is a product in constant development and evolution, the outcome of a long process of **research** and **development**, that has resulted in the realization of products of outstanding **aesthetic** effect, using **HD polyester resin** based paints.

A-Black with its “creased, wrinkled” surface morphology stands out for its “fake tile” appearance. It is a vibrational surface that can have different, controllable **frequencies** and **depths**.

This product is mainly characterized by a **gloss** level lower than 5.



Find out about our applications



Feasibility

Coil width	min. 500 mm · max. 1,320 mm
Coil thickness	min. 0.3 mm · max. 1.5 mm
External coil diameter	min. 700 mm · max. 1,300 mm
Internal coil diameter	508 mm; 610 mm
Strip width	min. 20 mm

TREATMENT

2 degreasings + chrome-free passivation

PAINTING SPECIFICATIONS

COLOUR TOP: Anthracite grey
PE-HD WRINKLED
COLOUR BACK: Anthracite grey
PE (10 ± 2 microns)

UV Radiation Resistance
Category: RUV3
Coating used: compliant with
RoHS Directive

Technical Features

TEST	VALUE	REFERENCE STANDARD
Thickness	50 ± 10 µm*	EN 13523-1 (ECCA T1)
Gloss	2 ± 1	EN 13523-2 (ECCA T2)
Pencil hardness	F - H	EN 13523-4 (ECCA T4)
Adhesion on impact	100%	EN 13523-5 (ECCA T5)
Adhesion on forming	100%	EN 13523-6 (ECCA T6)
T.B. Adherence at 25° C	0T - 1T**	EN 13523-7 (ECCA T7)
T.B. Cracking at 25° C	0T - 2,5T**	EN 13523-7 (ECCA T7)
MEK	> 100	EN 13523-11 (ECCA T11)

* according to the characteristics of the support

**the measured thickness (DFT) is apparent



Alusteel Coating

via Risorgimento, 19
26867 Somaglia, Lodi, Italy
T +39 0377 579700
info@alusteel.it
www.alusteel.it

Alpine Anodizing

via Friuli, 75
24055 Cologno al Serio,
Bergamo, Italy
T +39 035 897128
info@alpineanodizing.it
www.alpineanodizing.it

Metalcoat

via Antonio Stoppani, 10/C
24121 Bergamo, Italy
T +39 035 246509
info@metalcoat.it
www.metalcoat.it

Aleu - Aluminium Europe

piazza Francesco Buffoni, 5
21013 Gallarate, Varese, Italy
T +39 0331 1420010
info@aleu.it
www.aleu.it



The Painted Metal Atelier