

# Λ - BLACKTITANIUM



*The Painted Metal Atelier*

# A-BLACKTITANIUM



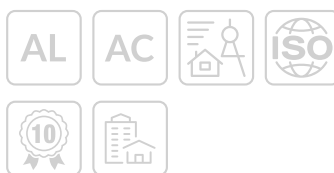
The application of our many years of know-how in the world of pre-painted metals allows us to best satisfy the creative needs of **architecture** and **design** projects.

**A-Blacktitanium** is our **Premium Collection** product inspired by **titanium zinc**.

Titanium is characterized by its extremely high **strength** and it is an important element in **modern architecture**.

The Guggenheim Museum in Bilbao, also known for its very unusual shape as the "**titanium flower**", is the project that earned the starchitect Frank Gehry the appreciation of the wider public, thanks to the daring shapes and the splendour of the **titanium** facing.

With **A-Blacktitanium** our **pre-painted metal Atelier** can offer a **titanium zinc** finish, to best satisfy every design requirement.



- > **Support:**  
aluminium, steel
- > **Guarantee:**  
up to 10 years
- > **Applications:**  
outdoor, tinsmithing

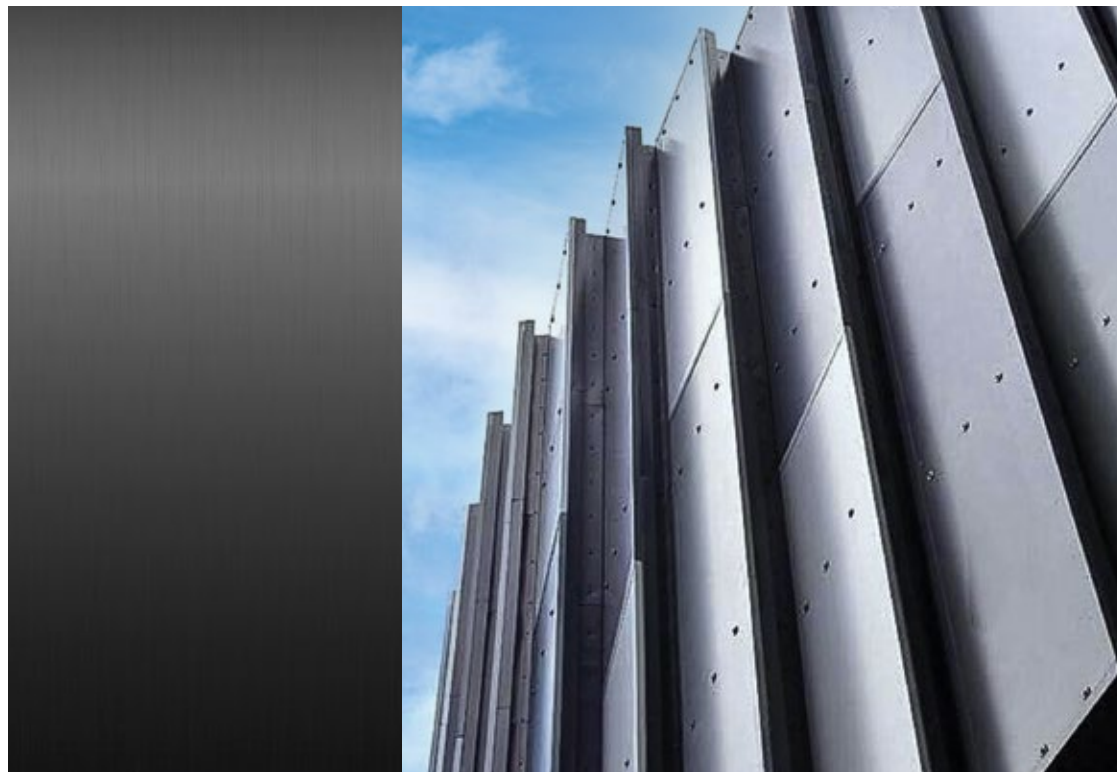


# A-BLACKTITANIUM

**A-Blacktitanium** is the result of a production process involving application of paint on aluminium to create a finish resembling **black based titanium zinc**.

The product is recommended for **outdoor** use (**tinsmithing, cladding, etc.**). Since the pattern includes multiple colours, it is not possible to give a Delta E value, although different runs can certainly be used together.

A more rugged appearance can be achieved by applying a transparent **wrinkled** finish.



Find out about our applications



## TREATMENT

2 degreasings + chrome-free passivation

## TOP SURFACE

BASE: PE 9 - 11 microns

INK: 1 - 2 microns

TOP TRANSPARENT:

PE 14 - 16 microns

## BACK SURFACE

BACK COAT: 6 ± 1 microns

or MONOCOUCHE 14 - 16 microns

UV Radiation Resistance

Category: RUV3

Coating used: compliant with

RoHS Directive

## Technical Features (refer to the smooth top)

TEST	VALUE	REFERENCE STANDARD
Thickness	24 - 29 µm	EN 13523-1 (ECCA T1)
Gloss	10 ± 5	EN 13523-2 (ECCA T2)
Pencil hardness	F - H	EN 13523-4 (ECCA T4)
Adhesion on impact	100%	EN 13523-5 (ECCA T5)
Adhesion on forming	100%	EN 13523-6 (ECCA T6)
T.B. Adherence at 25° C	0T - 1T*	EN 13523-7 (ECCA T7)
T.B. Cracking at 25° C	0T - 2,5T*	EN 13523-7 (ECCA T7)
MEK	> 100	EN 13523-11 (ECCA T11)

\* according to the characteristics of the support

## Feasibility

Coil width	min. 500 mm · max. 1,320 mm
Coil thickness	min. 0.3 mm · max. 1.5 mm
External coil diameter	min. 700 mm · max. 1,300 mm
Internal coil diameter	508 mm; 610 mm
Strip width	min. 20 mm



**Alusteel Coating**

via Risorgimento, 19  
26867 Somaglia, Lodi, Italy  
T +39 0377 579700  
info@alusteel.it  
www.alusteel.it

**Alpine Anodizing**

via Friuli, 75  
24055 Cologno al Serio,  
Bergamo, Italy  
T +39 035 897128  
info@alpineanodizing.it  
www.alpineanodizing.it

**Metalcoat**

via Antonio Stoppani, 10/C  
24121 Bergamo, Italy  
T +39 035 246509  
info@metalcoat.it  
www.metalcoat.it

**Aleu - Aluminium Europe**

piazza Francesco Buffoni, 5  
21013 Gallarate, Varese, Italy  
T +39 0331 1420010  
info@aleu.it  
www.aleu.it



*The Painted Metal Atelier*