

Λ - COPPER



The Painted Metal Atelier

A-COPPER

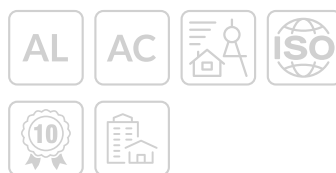
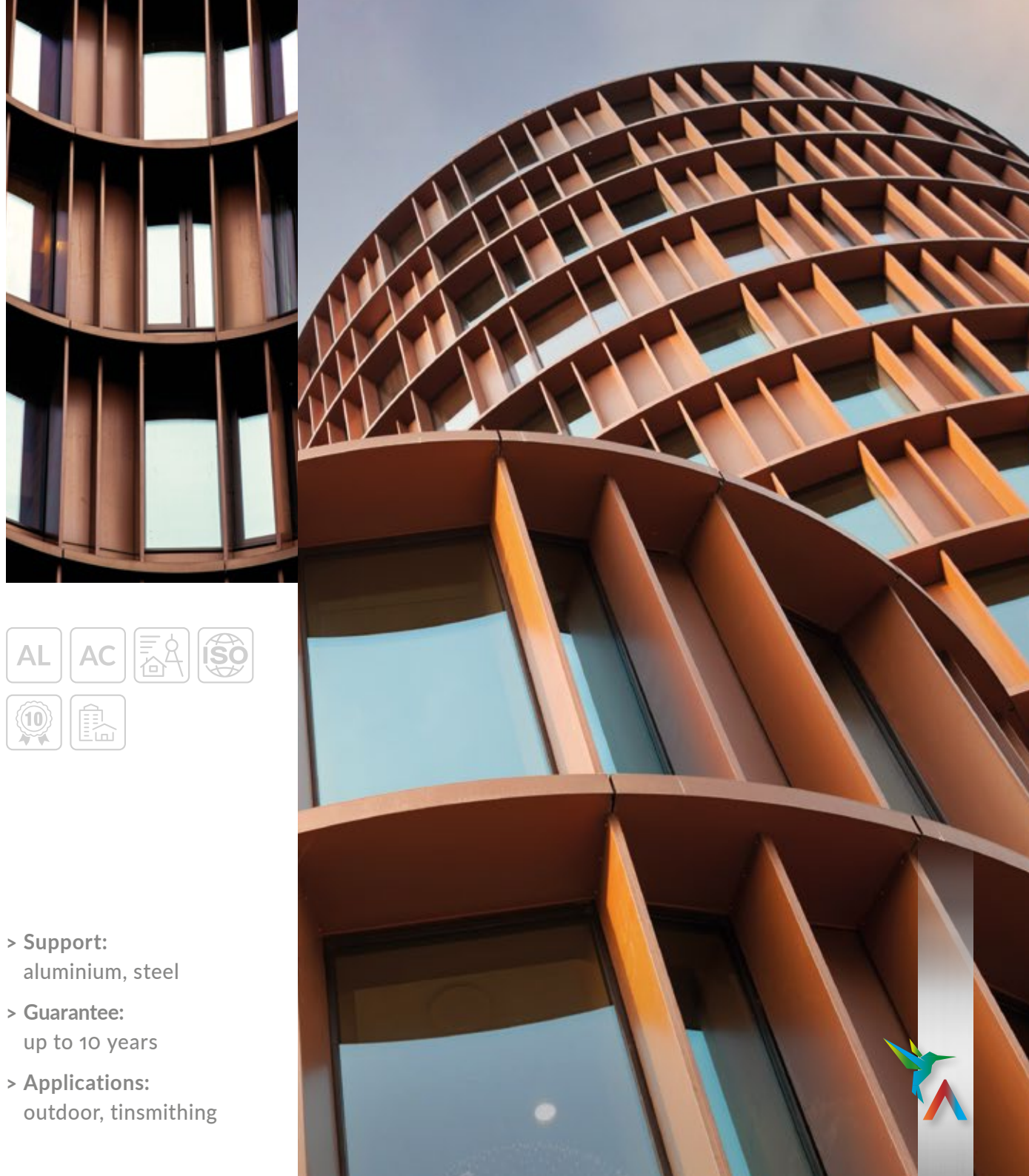
The application of our many years of know-how in the world of pre-painted metals allows us to best satisfy the creative needs of **architecture** and **design** projects.

A-Copper is our **Premium Collection** product inspired by **antique copper**.

Copper is a historical material already used by some of the oldest testified civilizations, and its history is estimated to extend back at least 10,000 years. It was used, for example, to mint coins in ancient times (as early as the IV century B.C., Servio Tullio ordered the minting of "pecuniæ" coins).

Today **copper's** formal, structural, and plastic properties are exploited in contemporary art, architecture, design, and technology.

With **A-Copper**, our **pre-painted metal Atelier** can offer a finish that recreates the effect of copper, to best satisfy every design requirement.



- > **Support:**
aluminium, steel
- > **Guarantee:**
up to 10 years
- > **Applications:**
outdoor, tinsmithing



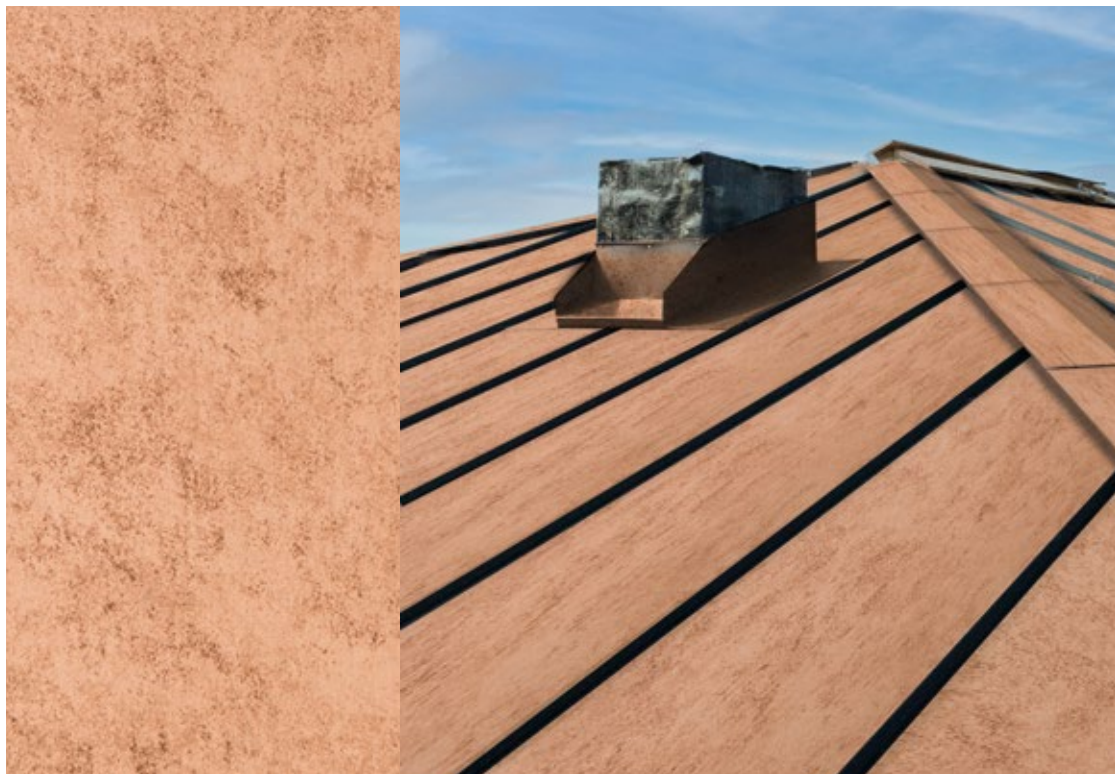
A-COPPER

This treatment cycle involves application of **polyurethane paints** together with a **transparent super PE coating** on an aluminium or steel base (ZINCOPPER), to achieve a finished appearance similar to **antique copper**.

The product is recommended for all **outdoor** uses (**tinsmithing, cladding**). Since the pattern is created using multiple colours, it is not possible to guarantee any Delta E value, although different runs can certainly be used together.

Feasibility

Coil width	min. 500 mm · max. 1,320 mm
Coil thickness	min. 0.3 mm · max. 1.5 mm
External coil diameter	min. 700 mm · max. 1,300 mm
Internal coil diameter	508 mm; 610 mm
Strip width	min. 20 mm



TREATMENT

2 degreasings + chrome-free passivation

TOP SURFACE

BASE: PUR copper 14 - 16 microns

INK: 1 - 2 microns

TOP TRASPARENT:

super-PE 9 - 11 microns

BACK SURFACE

BACK COAT: 6 ± 1 microns

or MONOCOUCHE 14 - 16 microns

UV Radiation Resistance

Category: RUV3

Coating used: compliant with

RoHS Directive

Technical Features product with transparent super PE

TEST	VALUE	REFERENCE STANDARD
Thickness	24 - 29 µm	EN 13523-1 (ECCA T1)
Gloss	20 ± 10	EN 13523-2 (ECCA T2)
Pencil hardness	F - H	EN 13523-4 (ECCA T4)
Adhesion on impact	100%	EN 13523-5 (ECCA T5)
Adhesion on forming	100%	EN 13523-6 (ECCA T6)
T.B. Adherence at 25° C	0T - 1T*	EN 13523-7 (ECCA T7)
T.B. Cracking at 25° C	0T - 2,5T*	EN 13523-7 (ECCA T7)
MEK	> 100	EN 13523-11 (ECCA T11)

* according to the characteristics of the support



Find out about
our applications



Alusteel Coating

via Risorgimento, 19
26867 Somaglia, Lodi, Italy
T +39 0377 579700
info@alusteel.it
www.alusteel.it

Alpine Anodizing

via Friuli, 75
24055 Cologno al Serio,
Bergamo, Italy
T +39 035 897128
info@alpineanodizing.it
www.alpineanodizing.it

Metalcoat

via Antonio Stoppani, 10/C
24121 Bergamo, Italy
T +39 035 246509
info@metalcoat.it
www.metalcoat.it

Aleu - Aluminium Europe

piazza Francesco Buffoni, 5
21013 Gallarate, Varese, Italy
T +39 0331 1420010
info@aleu.it
www.aleu.it



The Painted Metal Atelier