

# Λ - CORTEN



*The Painted Metal Atelier*



# A-CORTEN

The application of our many years of know-how in the world of pre-painted metals allows us to best satisfy the creative needs of **architecture** and **design** projects.

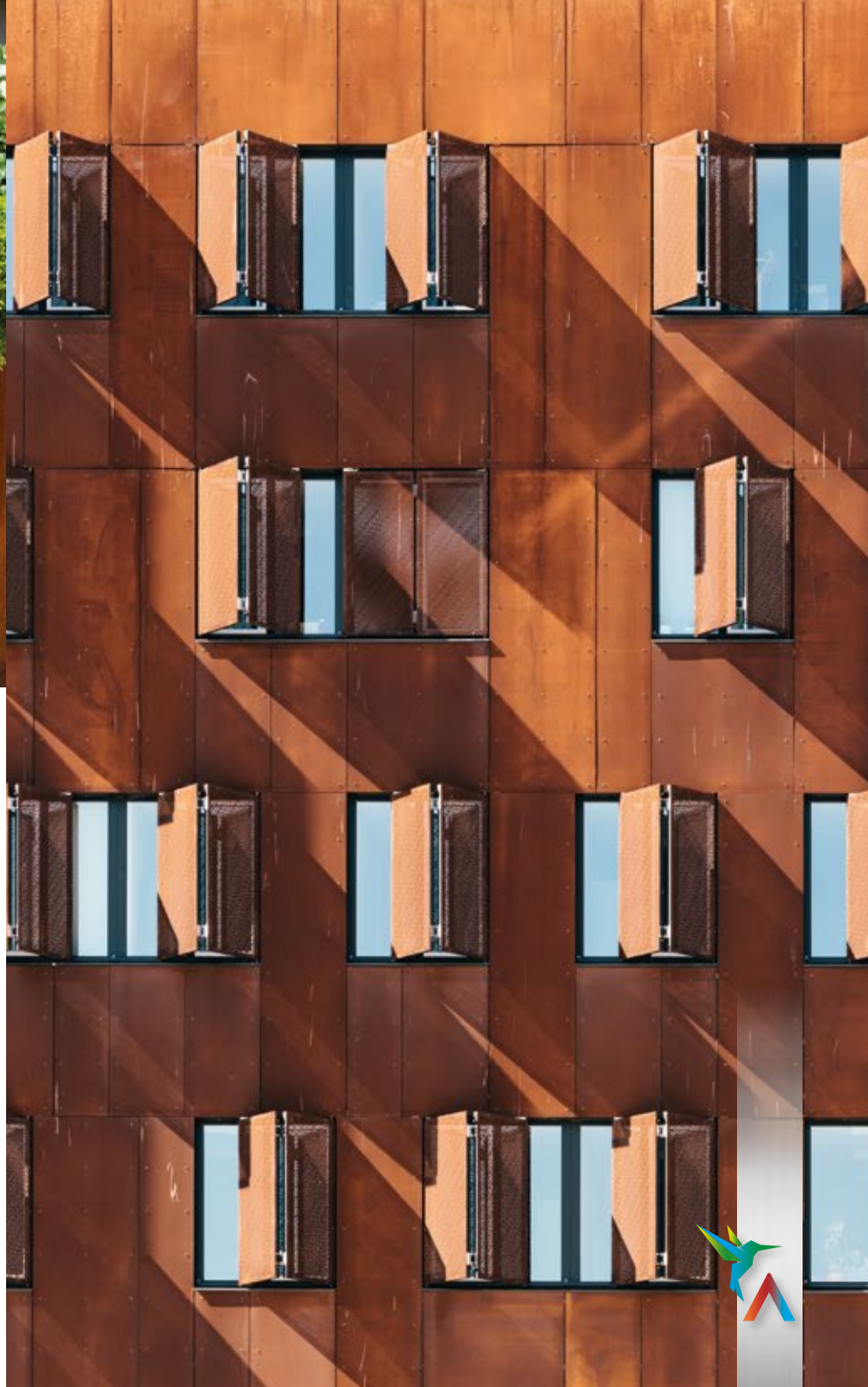
**A-Corten** is our **Premium Collection** product specifically developed to provide an unequalled material for its variety and consistency.

As an expression of the passage of time, A-Corten was developed to satisfy the needs of the **architecture and design worlds**, in order to create environments that can be “worn” day to day, as promoted in the works of Alberto Burri and Roberto Silvestri, both real material artists.

So, with **A-Corten** our **pre-painted metal Atelier** can offer solutions for every need, with great flexibility, which in turn creates a kaleidoscope of chromatic effects, inexorably linked to the passage of time, and always open to characterization with your own customizations.



- > **Support:**  
aluminium, steel
- > **Colours available:**  
light, dark
- > **Guarantee:**  
up to 10 years
- > **Applications:**  
outdoor, indoor



# A-CORTEN

**A-Corten** emerges from a pre-painting production process using **polyester paints**, which achieve a convincing effect like that of **Corten steel**.

Its main characteristic is **excellent corrosion resistance** against atmospheric agents, because its natural oxidization process stops with time and without extending inside, forming an effective protective patina.

The material is highly prized in the **architectural** and **design worlds**, with its warm oxidized colour shades that develop on the surface.

It is ideal for countless **indoor** and **outdoor** aesthetic compositions, thanks to an unusual “rusty elegance” that gives the impression of being “well-used” and marked with the signs of time.

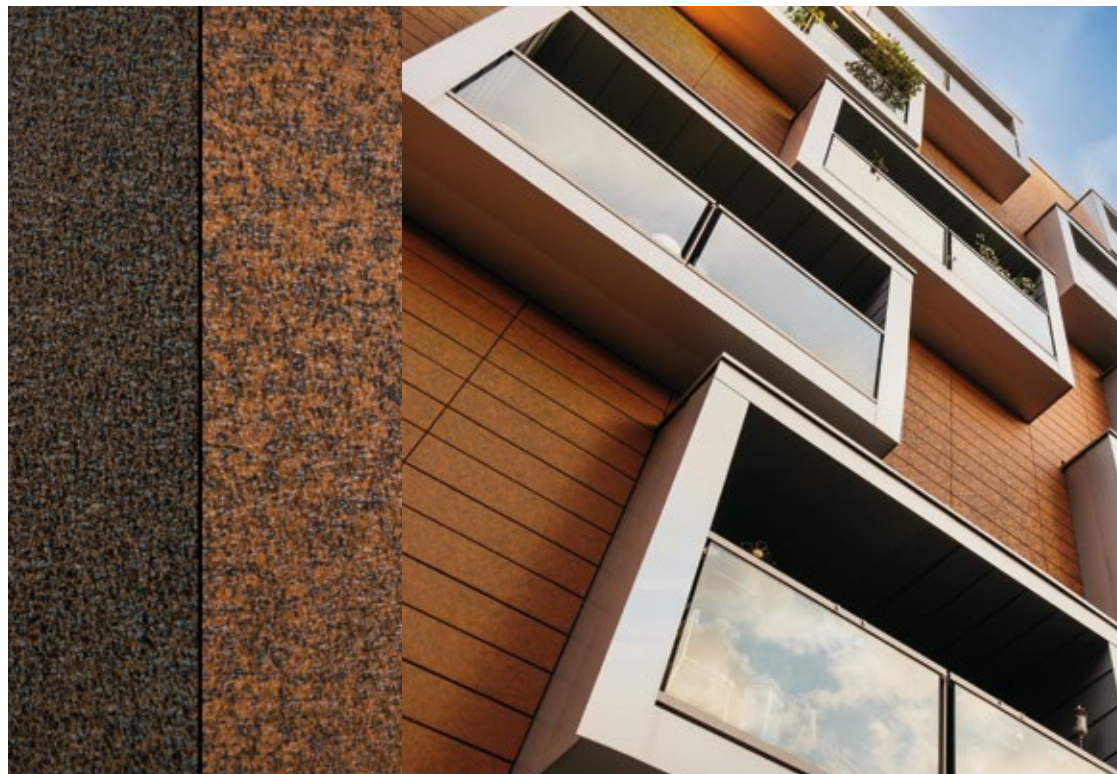
Given that **Corten** is very easily soiled and not very workable, our solution achieves an optimum balance between looks and functionality.

The support base can be **aluminium** or **steel** and the product is recommended for all uses both interior and exterior, with a **10 year corrosion guarantee**.

The production cycle is unable to guarantee any Delta E value, although different runs can certainly be used together.

## Feasibility

Coil width	min. 500 mm · max. 1,320 mm
Coil thickness	min. 0.3 mm · max. 1.5 mm
External coil diameter	min. 700 mm · max. 1,300 mm
Internal coil diameter	508 mm; 610 mm
Strip width	min. 20 mm



### TREATMENT

2 degreasings + chrome-free passivation

### TOP SURFACE

BASE: PUR brown 14 - 16 microns

INK: 1 - 2 microns

TOP TRANSPARENT: super-PE wrinkled 14 - 16 microns

### BACK SURFACE

BACK COAT: 6 ± 1 microns  
or MONOCOUCHE 14 -16 microns

UV Radiation Resistance

Category: RUV3

Coating used: compliant with  
RoHS Directive

## Technical Features

TEST	VALUE	REFERENCE STANDARD
Thickness	29 - 34 µm**	EN 13523-1 (ECCA T1)
Gloss	5 ± 3	EN 13523-2 (ECCA T2)
Pencil hardness	F - H	EN 13523-4 (ECCA T4)
Adhesion on impact	100%	EN 13523-5 (ECCA T5)
Adhesion on forming	100%	EN 13523-6 (ECCA T6)
T.B. Adherence at 25° C	0T - 1T*	EN 13523-7 (ECCA T7)
T.B. Cracking at 25° C	0T - 2,5T*	EN 13523-7 (ECCA T7)
MEK	> 100	EN 13523-11 (ECCA T11)

\* according to the characteristics of the support

\*\* the measured thickness (DFT) is apparent



Find out about  
our applications





**Alusteel Coating**

via Risorgimento, 19  
26867 Somaglia, Lodi, Italy  
T +39 0377 579700  
info@alusteel.it  
www.alusteel.it

**Alpine Anodizing**

via Friuli, 75  
24055 Cologno al Serio,  
Bergamo, Italy  
T +39 035 897128  
info@alpineanodizing.it  
www.alpineanodizing.it

**Metalcoat**

via Antonio Stoppani, 10/C  
24121 Bergamo, Italy  
T +39 035 246509  
info@metalcoat.it  
www.metalcoat.it

**Aleu - Aluminium Europe**

piazza Francesco Buffoni, 5  
21013 Gallarate, Varese, Italy  
T +39 0331 1420010  
info@aleu.it  
www.aleu.it



*The Painted Metal Atelier*