

Λ - PATINA GRAU



The Painted Metal Atelier

A-PATINA GRAU

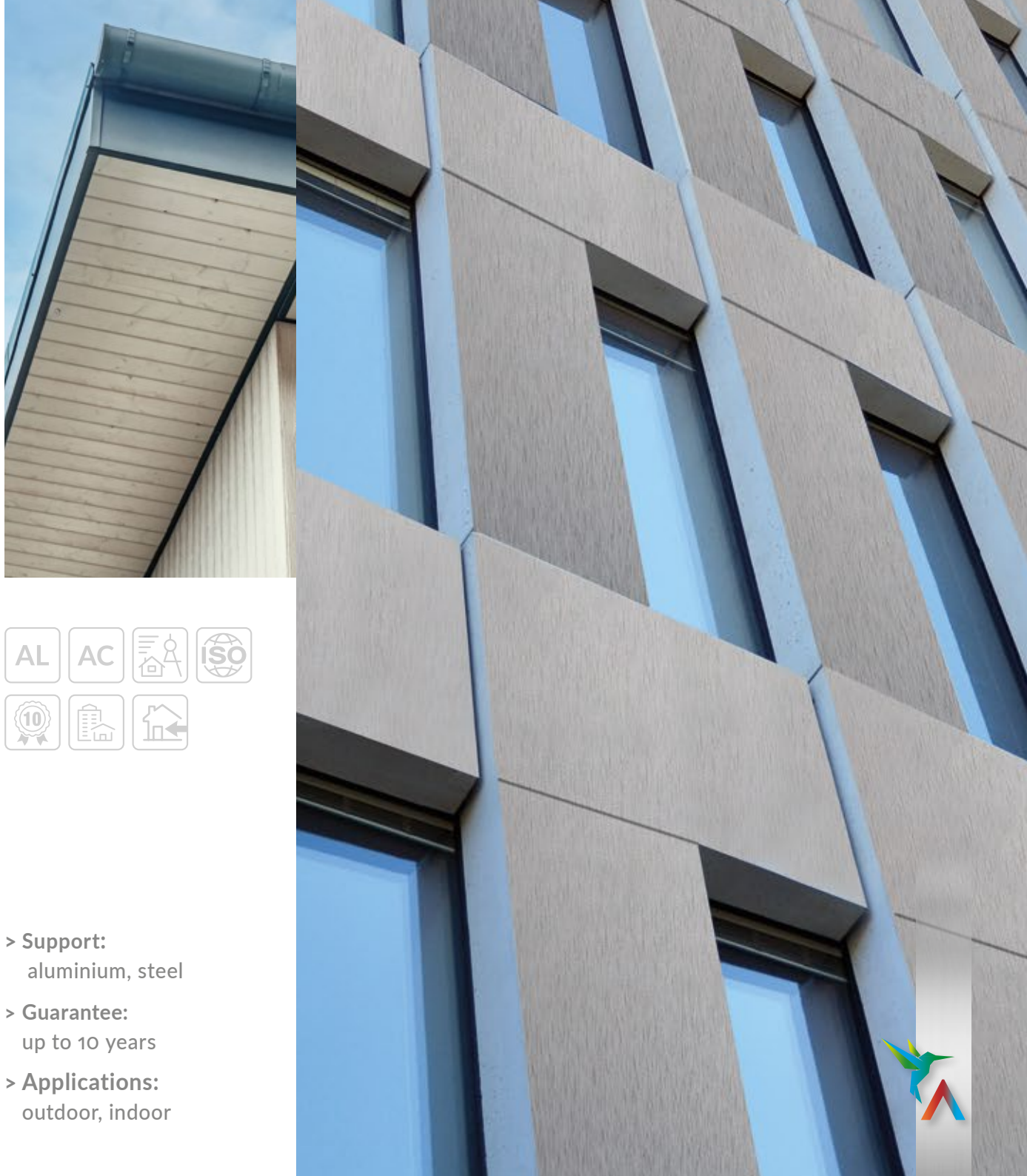
The application of our many years of know-how in the world of pre-painted metals allows us to best satisfy the creative needs of **architecture** and **design** projects.

A-Patina Grau is our **Premium Collection** product that gives metal a “galvanized” effect.

Industrial, unfinished, tough, resilient, durable: these are just a few of the adjectives that have been used to describe galvanization, which has a long history in the architectural world, dating back to **1830** and the construction of the London Docks.

Today galvanization is widely used on **facades**, especially in the Nordic countries, and it has been adopted by famous architects, in primis Frank O. Gehry, the extremely famous creator of works like the Guggenheim Museum in Bilbao.

Thanks to **A-Patina Grau**, it is possible to achieve the same chromatic effect as galvanization with a pre-painting treatment that gives the base product a functional and highly prized look, while at the same time representing a valid alternative to heavy galvanized steel plates.



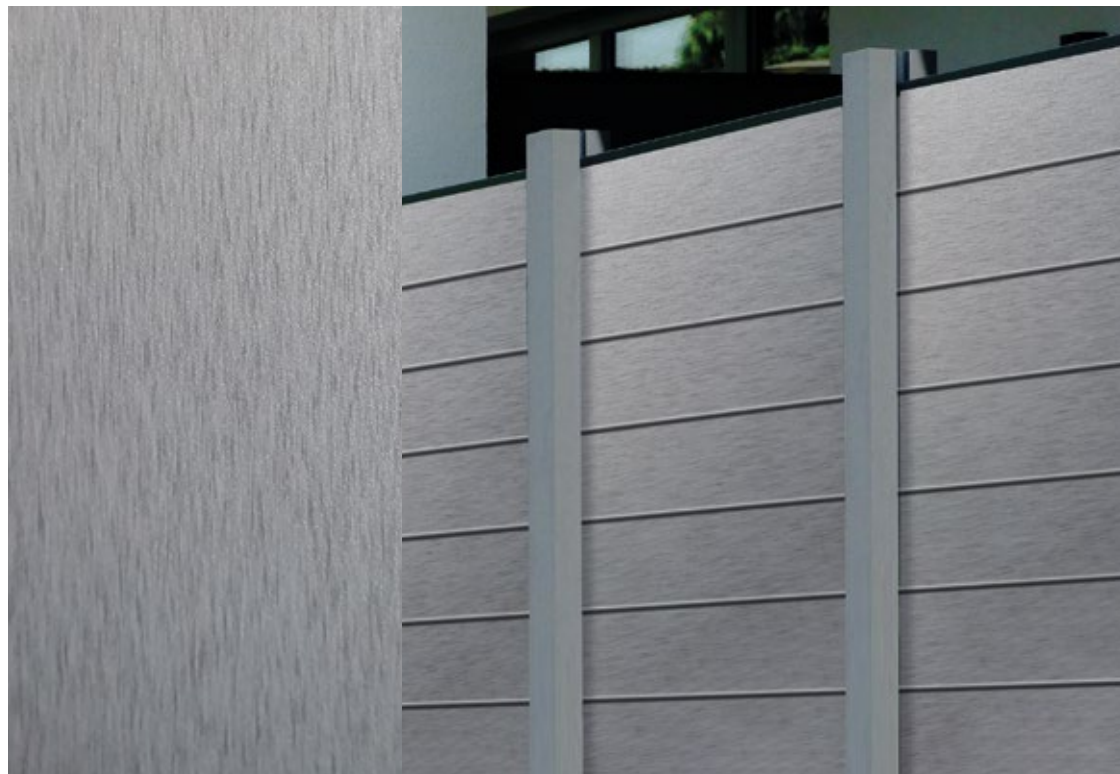
- > **Support:**
aluminium, steel
- > **Guarantee:**
up to 10 years
- > **Applications:**
outdoor, indoor



A-PATINA GRAU

A-Patina Grau is the outcome of a special treatment involving two degreasing cycles as well as passivation (chrome free), and it is highly appreciated for its characteristic aesthetic finish.

The product is recommended for all **indoor** and **outdoor** use, in particular for prestige roofing.



Find out about our applications



TREATMENT

2 degreasings + chrome-free passivation

TOP SURFACE

BASE: 14 - 16 microns

INK: 1 - 2 microns

TOP TRASPARENT:

13 - 15 microns

BACK SURFACE

BACK COAT: 5 - 7 microns

UV Radiation Resistance

Category: Ruv2

Coating used: compliant with RoHS Directive

Technical Features

TEST	VALUE	REFERENCE STANDARD
Thickness	45 ± 7 µm**	EN 13523-1 (ECCA T1)
Gloss	2 - 7	EN 13523-2 (ECCA T2)
Pencil hardness	F - H	EN 13523-4 (ECCA T4)
Adhesion on impact	100%	EN 13523-5 (ECCA T5)
Adhesion on forming	100%	EN 13523-6 (ECCA T6)
T.B. Adherence at 25° C	0T - 1T*	EN 13523-7 (ECCA T7)
T.B. Cracking at 25° C	0T - 2,5T*	EN 13523-7 (ECCA T7)
MEK	> 100	EN 13523-11 (ECCA T11)

* according to the characteristics of the support

** the measured thickness (DFT) is apparent

Feasibility

Coil width	min. 500 mm · max. 1,320 mm
Coil thickness	min. 0.3 mm · max. 1.5 mm
External coil diameter	min. 700 mm · max. 1,300 mm
Internal coil diameter	508 mm; 610 mm
Strip width	min. 20 mm



Alusteel Coating

via Risorgimento, 19
26867 Somaglia, Lodi, Italy
T +39 0377 579700
info@alusteel.it
www.alusteel.it

Alpine Anodizing

via Friuli, 75
24055 Cologno al Serio,
Bergamo, Italy
T +39 035 897128
info@alpineanodizing.it
www.alpineanodizing.it

Metalcoat

via Antonio Stoppani, 10/C
24121 Bergamo, Italy
T +39 035 246509
info@metalcoat.it
www.metalcoat.it

Aleu - Aluminium Europe

piazza Francesco Buffoni, 5
21013 Gallarate, Varese, Italy
T +39 0331 1420010
info@aleu.it
www.aleu.it



The Painted Metal Atelier